

North Lincolnshire Council

**Internal Drainage Boards / Water Level Management Boards**

There are 5 Internal Drainage Board (IDB) districts within North Lincolnshire, some of which are co-managed by a different Engineering Group. These IDB's/WLMB's are:

Scunthorpe and Gainsborough WLMB

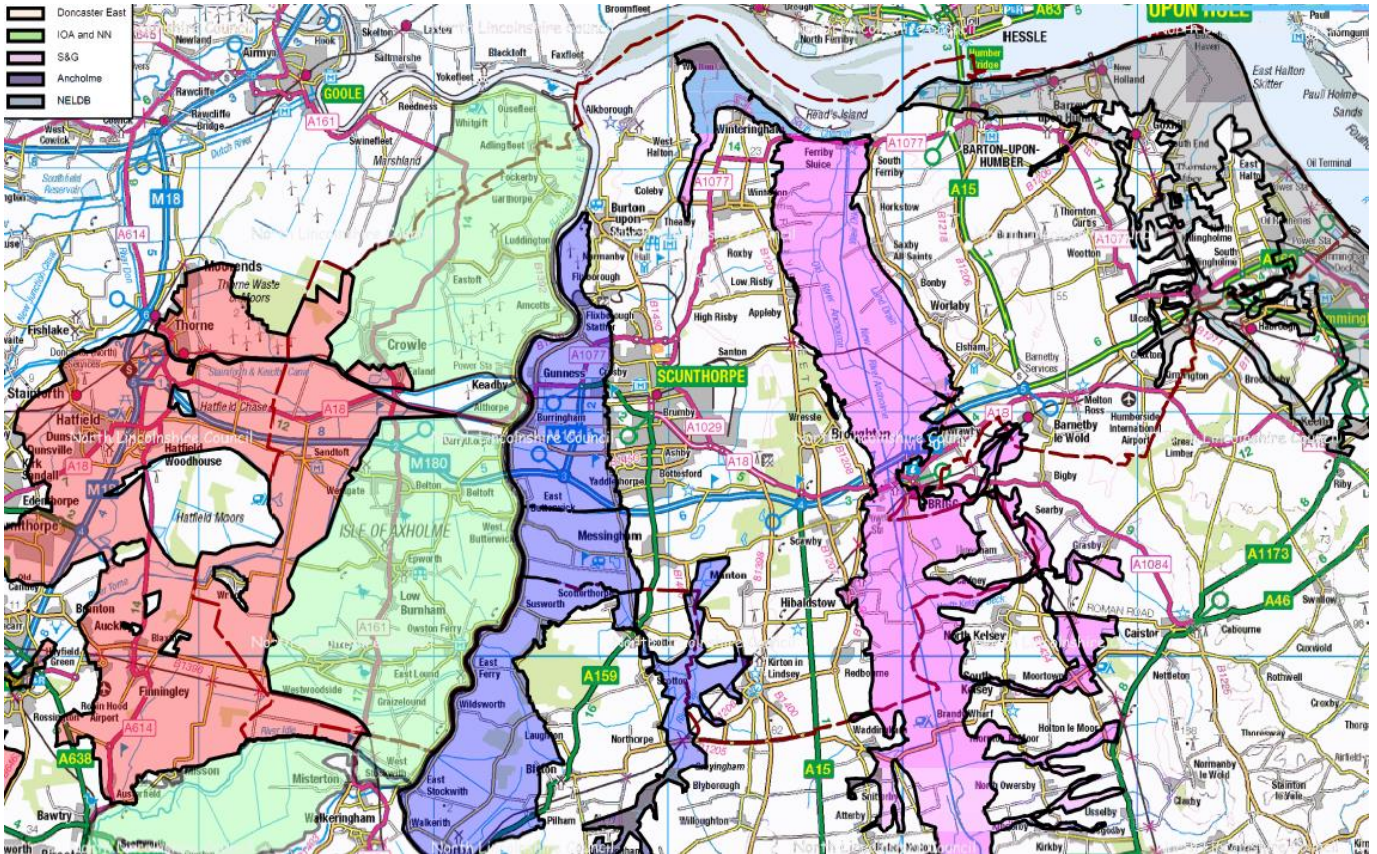
Ancholme IDB

Isle of Axholme and North Notts WLMB

North East Lindsey IDB

Doncaster East IDB

The plan area for the IDB areas can be seen in the below figure for reference.



North Lincolnshire Council pay an annual levy to the above boards to manage watercourses within our area.

The most recent annual figures are shown below:

<b>Internal Drainage Board</b>	<b>20/21 Levy</b>	<b>21/22 Levy</b>
<b>Ancholme Internal Drainage Board</b>	206,609.00	206,609.00
<b>Doncaster East Internal Drainage Board</b>	14,723.00	15,312.00
<b>Scunthorpe and Gainsborough Internal Drainage Board</b>	255,191.00	255,191.00
<b>North East Lindsey Drainage Board</b>	155,439.60	159,366.98
<b>Isle of Axholme and North Nottinghamshire Water Level Management Board</b>	688,267.00	722,815.00
<b>TOTAL</b>	<b>1,320,229.60</b>	<b>1,359,293.98</b>

There are a number of properties that lie within each respective district.

The property count shown below are taken from the current Local Land and Property Gazetteer (LLPG) and include those recorded as "Residential Dwelling" or "Commercial".

The property count for each IDB is divided by these categories as follows:

<b>Engineering Group on behalf of the IDB</b>	<b>IDB</b>	<b>Property Type</b>		
		<b>Commercial</b>	<b>Residential Dwelling</b>	<b>Total</b>
Shire Group	Ancholme Internal Drainage Board	297	2,462	2,759
Lindsey Marsh	Doncaster East Internal Drainage Board	252	785	1,037
Shire Group	Scunthorpe and Gainsborough Internal Drainage Board	598	4,695	5,293
Lindsey Marsh	Isle of Axholme & North Nottinghamshire Water Level Management Board	769	9,693	10,462
Witham Upper District	North East Lindsey Internal Drainage Board	401	2,217	2,618
		<b>2,317</b>	<b>19,852</b>	<b>22,169</b>

The stakeholders for the IDB's consultation attend each Board meeting, which is held minimal twice per annum.

The stakeholders included in the Board are determined by the leading party Local Authority members. These can be for example major effected landowners (mainly agricultural), local residents, engineers, and officers or representatives from any Risk Management Authority.

Officers from NLC often advise the Board members with any up to date flooding information.

The Governance of each IDB generally follows the below hierarchy:

Chairman/Vice Chairman

Chief Exec

Clerk

Engineer to Board

Operatives